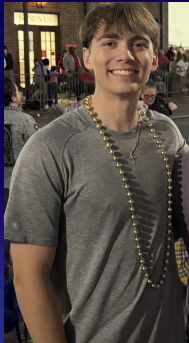


SocialSpot

<https://github.com/sawyerke/SocialSpot/tree/main>

<https://socialspot.club>

Ethan Polster, Garrett Read, Sawyer Kent, Ben Korjenek



Project Focus

- Make in-person connections more natural
- Discover and connect with nearby people
- Helps combine real world interactions with Social Media
- Reduces the need for awkward introductions



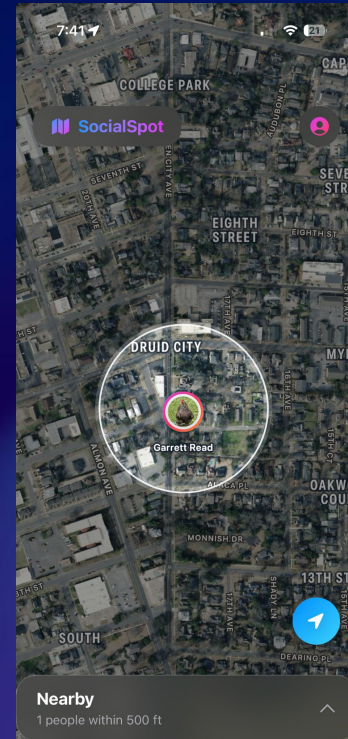
Prioritized Sprint Goals

- Live location testing
- Integration of location radius
- Bug hunting and fixing
- Ensure no Cyber concerns







Major Sprint Achievements/Feedback from Project Sponsor



- Radius Spotlight
- In-app Location Toggle
- Image Cropping
- Full Live User Interfacing
- Various Bug Fixes



Project Backlog

	Task	Status
	Account deletion	✓
	Secure profile image uploads	✓
	Add school feature on profile page	✓
	Username validation	BACK
	Ability to block users	BACK
	Add age filtering	BACK
	Password reset	BACK
	Rate limiting	BACK

Sprint Backlog

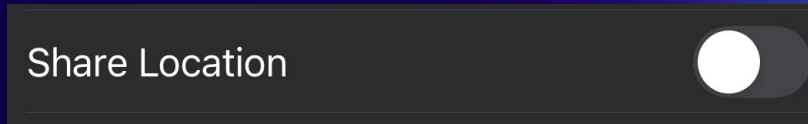
	Task	Status
	Added radius visual to map	✓
	Full live location between users	✓
	Crop profile photo	✓
	Finalize Supabase backend	✓
	In-app location toggle	✓
	Connect profile pics to frontend	✓
	Birthday/Age restrictions	✓
	Secure file upload	✓

What we didn't Complete

- Full email verification capabilities
- Integration with university emails
- Testing on a large number of users
- Getting app signed by Apple for download on the App Store
- Finalizing location update intervals

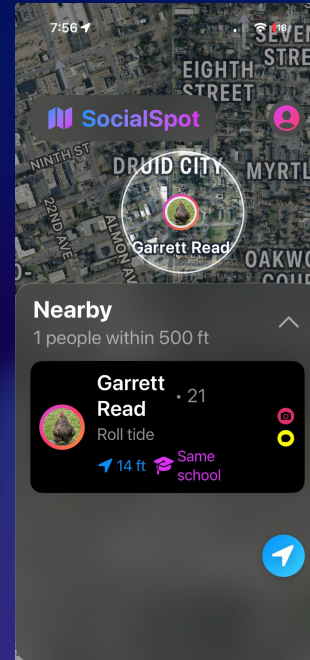
Lessons Learned

- Efficient backend structure in Supabase matters early
- Real-time features require tradeoffs (performance vs. responsiveness)
- Small delays in location updates can break user trust



Accessibility and Inclusive Design Features

- Large text support
- VoiceOver compatibility
- User control over what is shared
- Large tap targets



Contributions of each Team Member

- **Sawyer**
 - Spotlight Radius, Fixed social links bugs, In-app location toggle, Image Cropper, Test Cases
- **Garrett**
 - Assisted in live user location from multiple devices, various bug fixes, finalized social media link upload, project website
- **Ethan:**
 - Assisted in live location testing, fixed the concerns that Cyber had and various fixes with bugs in live location.
- **Ben:**
 - Implemented user location radius backend, location tracking timer, tested live location from multiple devices

Live Demo